



**State Water Resources Control Board  
 Temporary Urgency Change Order (12/14/2022)  
 Russian River Hydrologic Report  
 January 27, 2023 - February 2, 2023**

Prepared as a requirement of the Order approving Sonoma Water's Petition for Temporary Urgency Change in Permits 12947A, 12949, 12950, and 16596 (Applications 12919A, 15736, 15737, and 19351).

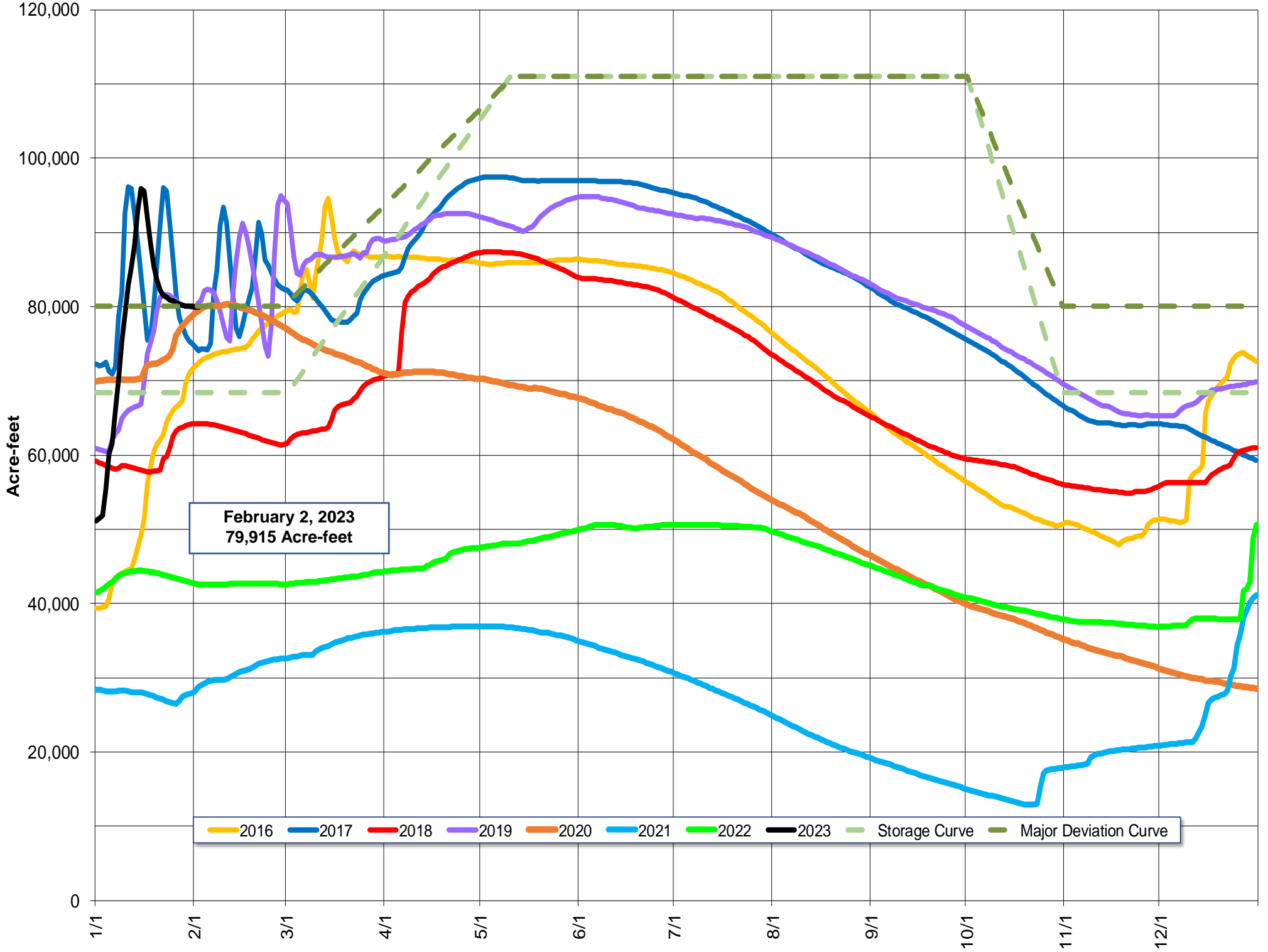
**Instream Flow Requirements as of February 2, 2023**

Basis	Reach	Instantaneous (cfs)	5-day Average (cfs)
Modified Per Order: Normal Condition	Upper Russian River	<b>150</b>	-
D-1610: Normal Condition	Dry Creek	<b>75</b>	-
Modified Per Order: Normal Condition	Lower Russian River	<b>125</b>	-

Upper and Lower Russian River based on criteria as established in the Order issued 12/14/2022.

**Lake Mendocino**

**Lake Mendocino Storage 2016 - 2023 and Storage Curve**



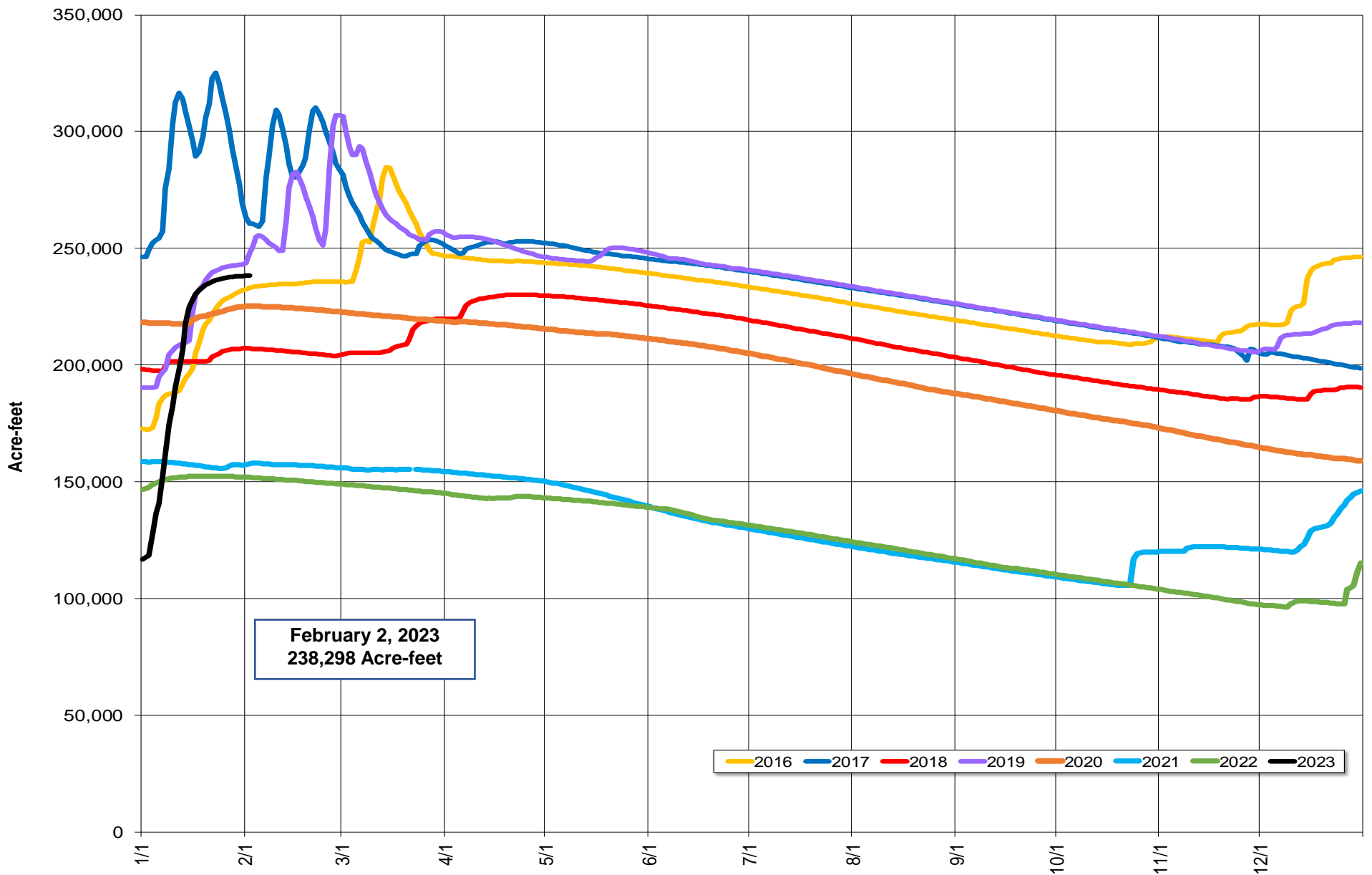
Storage (acre-feet)	February 2, 2023	<b>79,915</b>	
Change in Storage (acre-feet)	Last 30 days	<b>28,073</b>	<b>936</b>
	Last 7 days	<b>-397</b>	<b>-57</b>
Daily Inflow (cfs)	Last 7 days	Min	<b>81</b>
		Max	<b>148</b>
		Mean	<b>116</b>
Release (cfs)	Last 7 days	Min	<b>121</b>
		Max	<b>230</b>
		Mean	<b>153</b>

# Lake Sonoma



Nathan Baskett, March 3, 2011

## Lake Sonoma Storage 2016-2023



Storage (acre-feet)	February 2, 2023	238,298	
		Total	Average Daily Rate
Change in Storage (acre-feet)	Last 30 days	119,967	3,999
	Last 7 days	699	100
Daily Inflow (cfs)	Last 7 days	Min	108
		Max	227
		Mean	165
Release (cfs)	Last 7 days	Min	92
		Max	100
		Mean	92

### Potter Valley Project

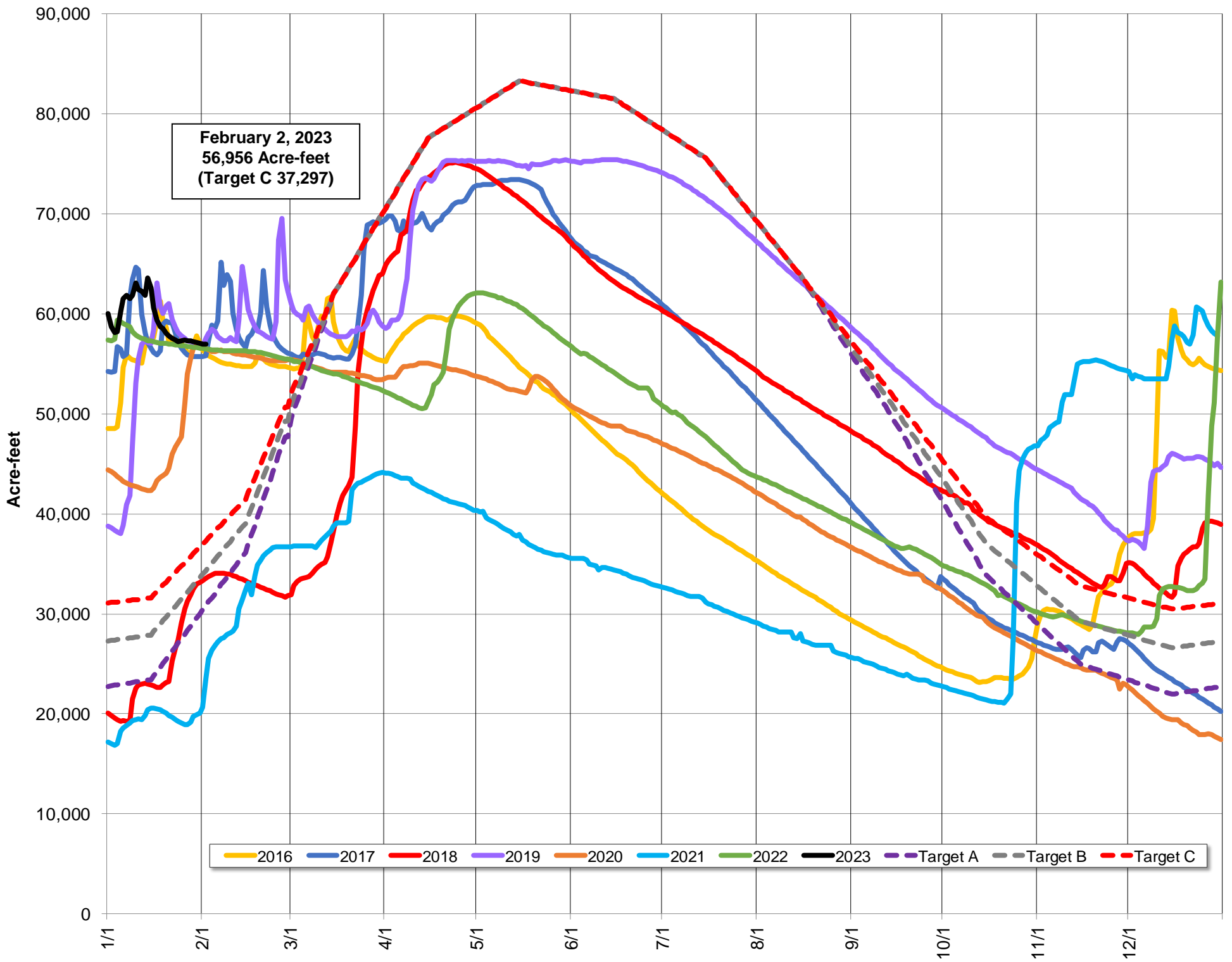
PVP Diversion (cfs)	February 2, 2023	45
---------------------	------------------	----

### Lake Pillsbury

Parameter	Date Range	Cumulative	Daily Average
Inflow* (acre-feet)	October 1, 2022 - February 2, 2023	272,234	2,178
	Last 7 days	7,147	1,021

\*Inflow calculation based on criteria established in D1610

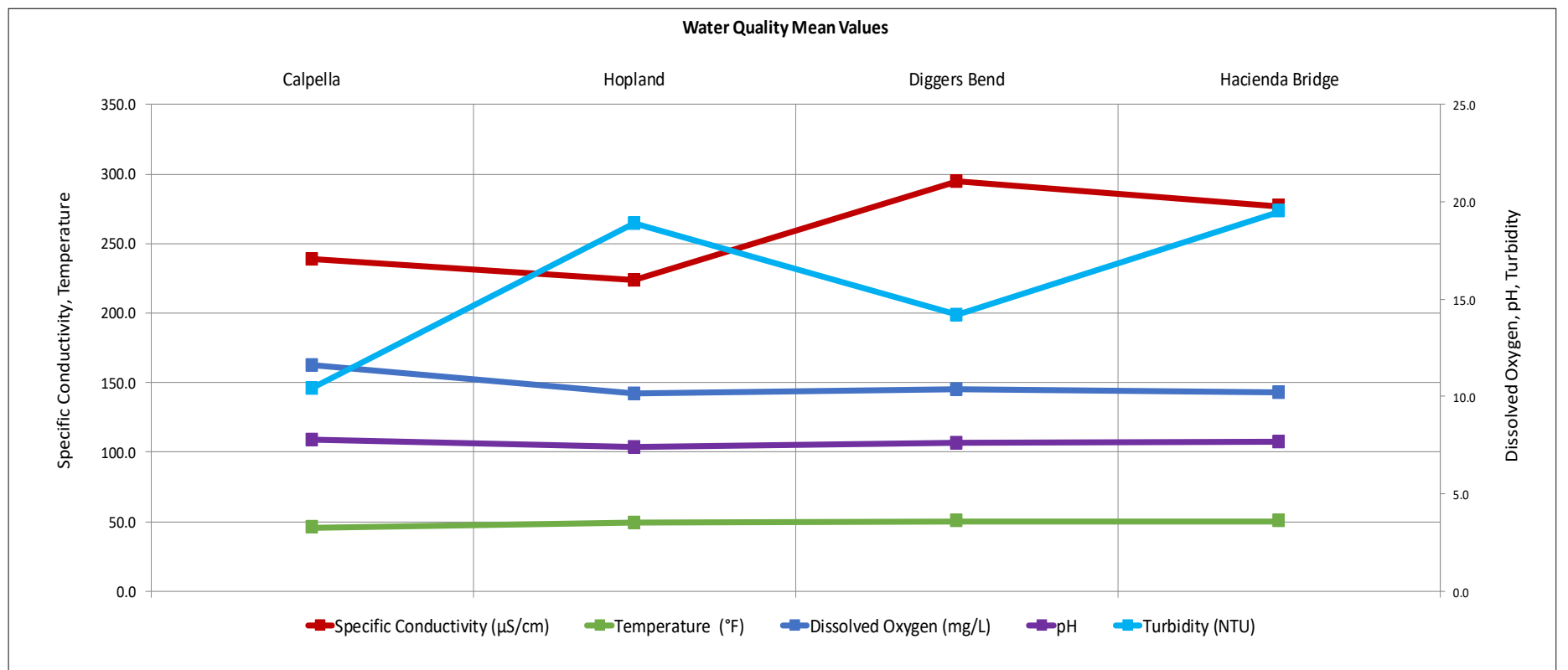
#### Lake Pillsbury Storage 2016 - 2023 and Target Storage Scenarios



### Russian River Flows (January 27, 2023 - February 2, 2023)

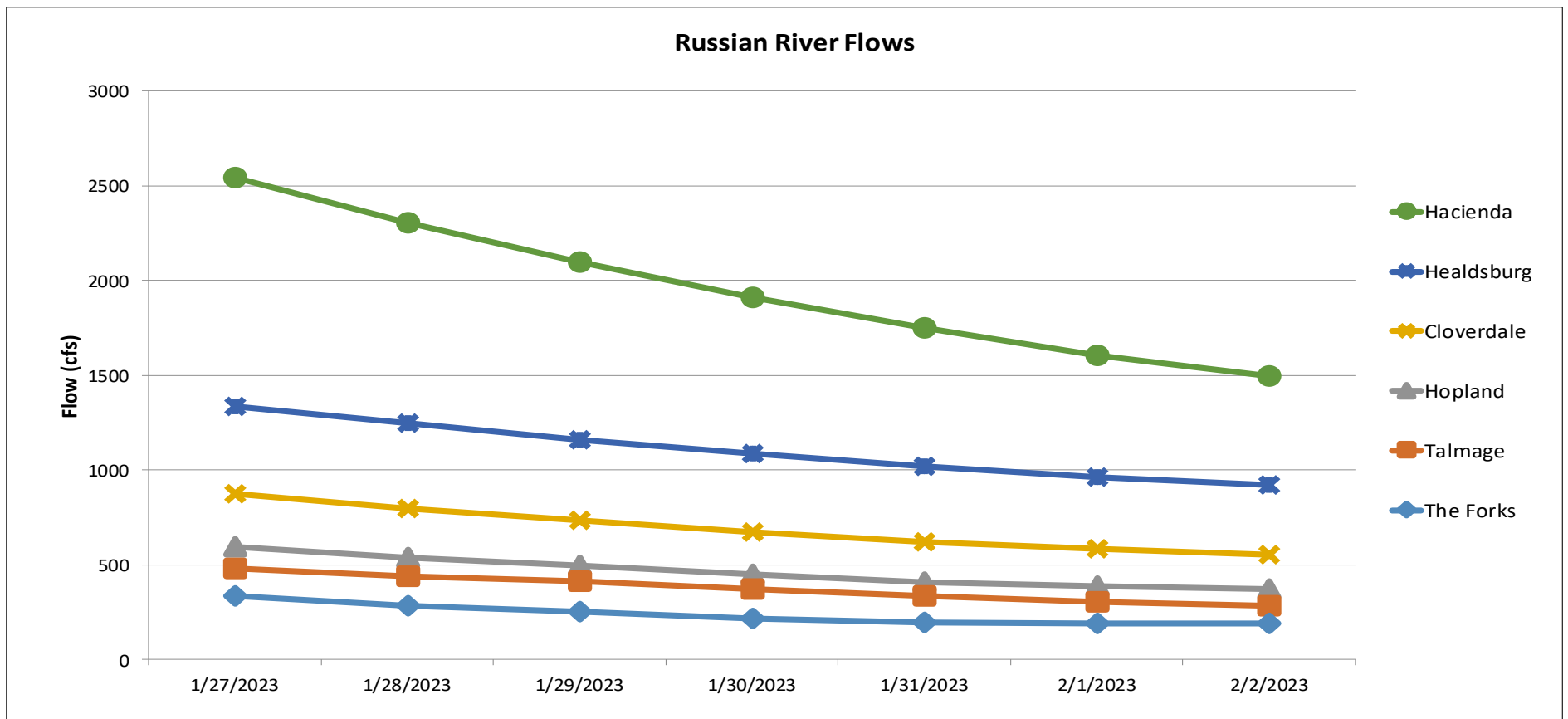
Parameter		Calpella	Hopland	Cloverdale*	Jimtown*	Diggers Bend	River Diversion System at Mirabel*	Hacienda Bridge	Johnsons Beach*
		USGS 11461500	USGS 11462500	USGS 11463000	USGS 11463682	USGS 11463980	SCWA	USGS 11467000	SCWA
Temperature (°F)	Min	41.0	46.9		48.0	48.0		48.2	
	Max	48.9	50.9		52.9	52.5		52.2	
	Mean	45.6	49.2		50.5	50.3		50.2	
Specific Conductivity (µS/cm)	Min	235.0	210.0			275.0		264.0	
	Max	241.0	236.0			309.0		289.0	
	Mean	238.8	223.5			294.8		277.0	
Dissolved Oxygen (mg/L)	Min	10.4	9.8			9.9		9.9	
	Max	12.4	10.4			10.7		10.5	
	Mean	11.6	10.1			10.4		10.2	
Dissolved Oxygen (% Saturation)	Min	88.7	87.3			89.4		88.7	
	Max	101.2	90.6			94.1		92.8	
	Mean	96.8	88.8			92.1		90.6	
pH	Min	7.5	7.4			7.6		7.6	
	Max	7.8	7.4			7.6		7.7	
	Mean	7.8	7.4			7.6		7.7	
Turbidity (NTU)	Min	9.2	15.4			9.4		13.2	
	Max	13.0	24.1			20.6		25.8	
	Mean	10.4	18.9			14.2		19.5	

\*Station operated seasonally



Gage	24-hr Average Flow (cfs)						
	Jan 27, 2023	Jan 28, 2023	Jan 29, 2023	Jan 30, 2023	Jan 31, 2023	Feb 1, 2023	Feb 2, 2023
The Forks*	337	282	252	217	198	193	189
Talmage USGS 11462080	481	440	414	371	334	305	287
Hopland USGS 11462500	592	539	498	451	411	389	371
Cloverdale USGS 11463000	874	797	733	674	618	584	554
Healdsburg USGS 11464000	1338	1247	1161	1087	1020	964	922
Hacienda USGS 11467000	2543	2306	2098	1911	1751	1607	1496

\*West Fork (USGS 11461000) + East Fork (Coyote Valley Dam Release)

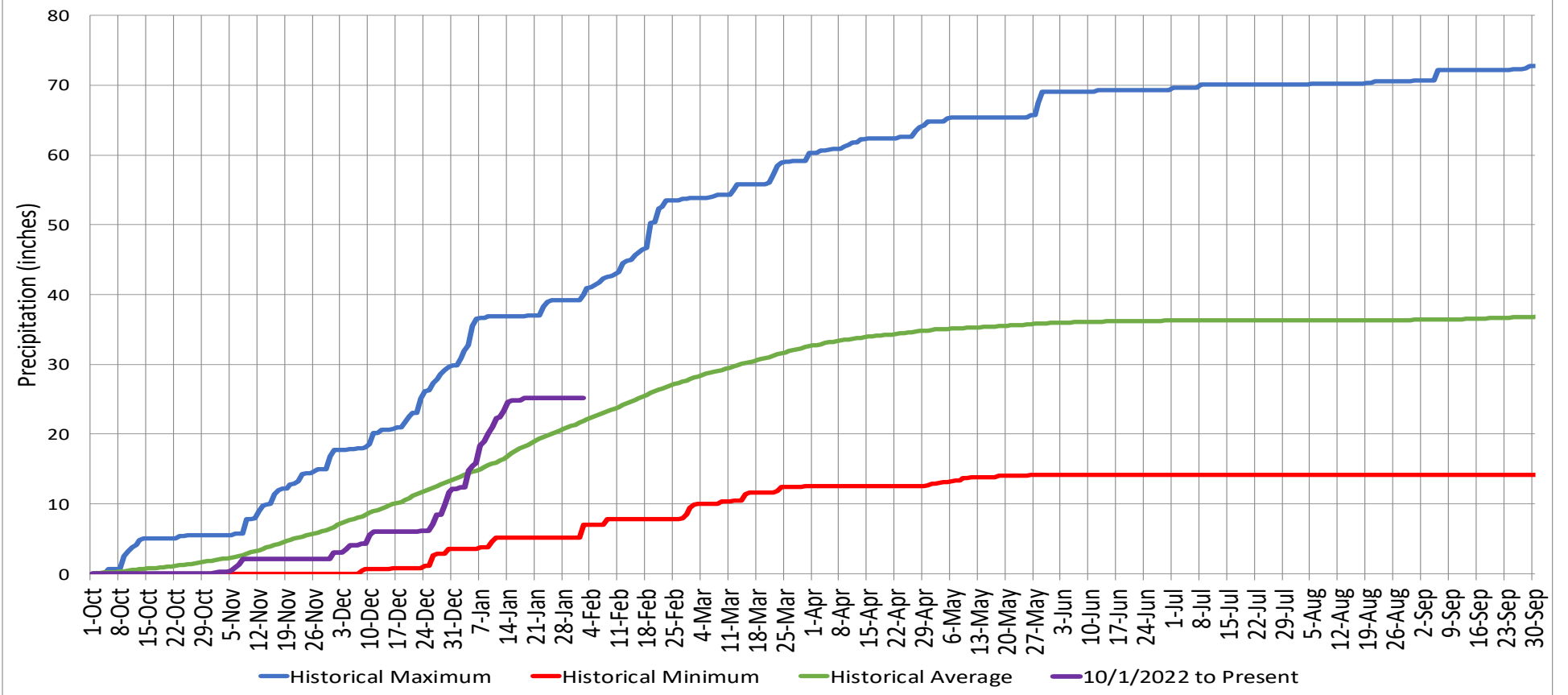


## Precipitation

Ukiah Municipal Airport (WBAN: 72590523275 (KUKI))

Date Range	Cumulative (inches)
Oct 1, 2022 - Feb 2, 2023	<b>25.2</b>
Last 7 Days*	<b>0.00</b>

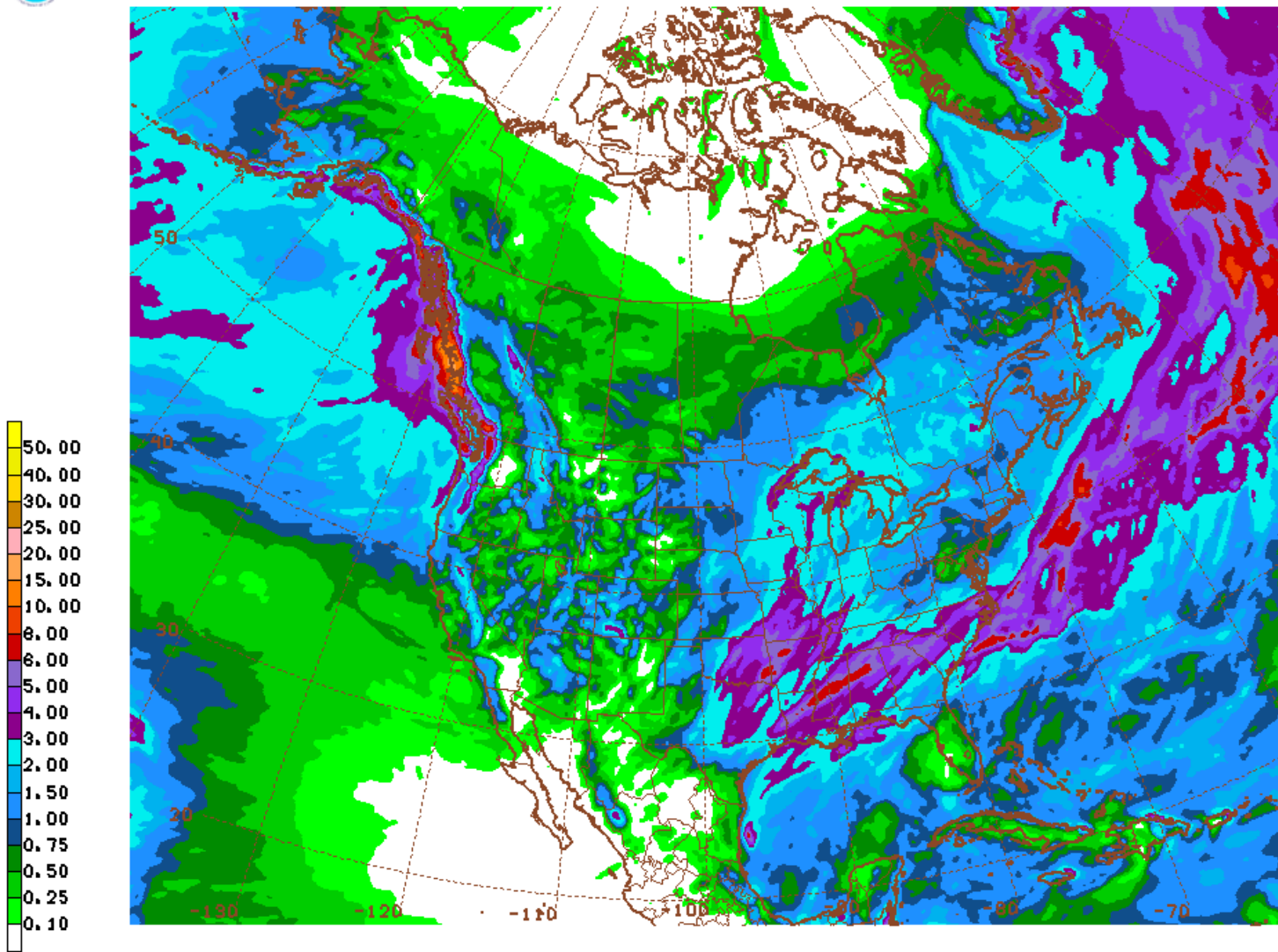
Cumulative Precipitation Comparison of Current Year versus Historic Record



### Global Forecast System Model 16-day Cumulative Precipitation Forecast



GFS 02/06/23 12UTC 384HR FCST VALID WED 02/22/23 12UTC NOAA/NWS/NCEP



GFS WED 230222/1200V384 384HR ACCUMULATED PRECIP (IN)

Date Range	Forecasted Cumulative (inches)
Feb 6 - Feb 22, 2023	<b>0.50</b>